



ESTS INSTITUTIONAL ACCREDITATION

ALESSANDRO BRUNELLI

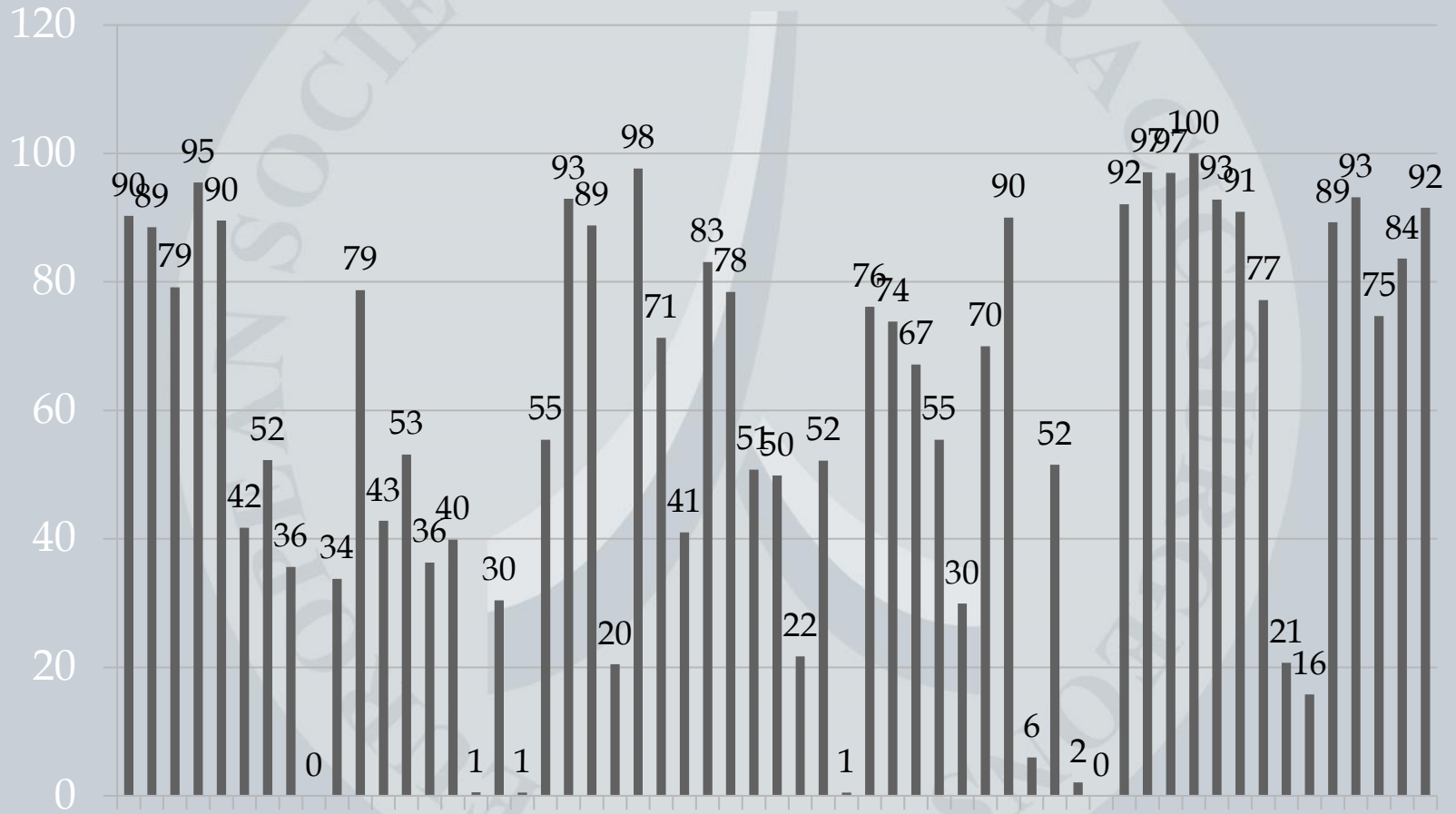
ESTS SECRETARY GENERAL

PURPOSE OF INSTITUTIONAL ACCREDITATION

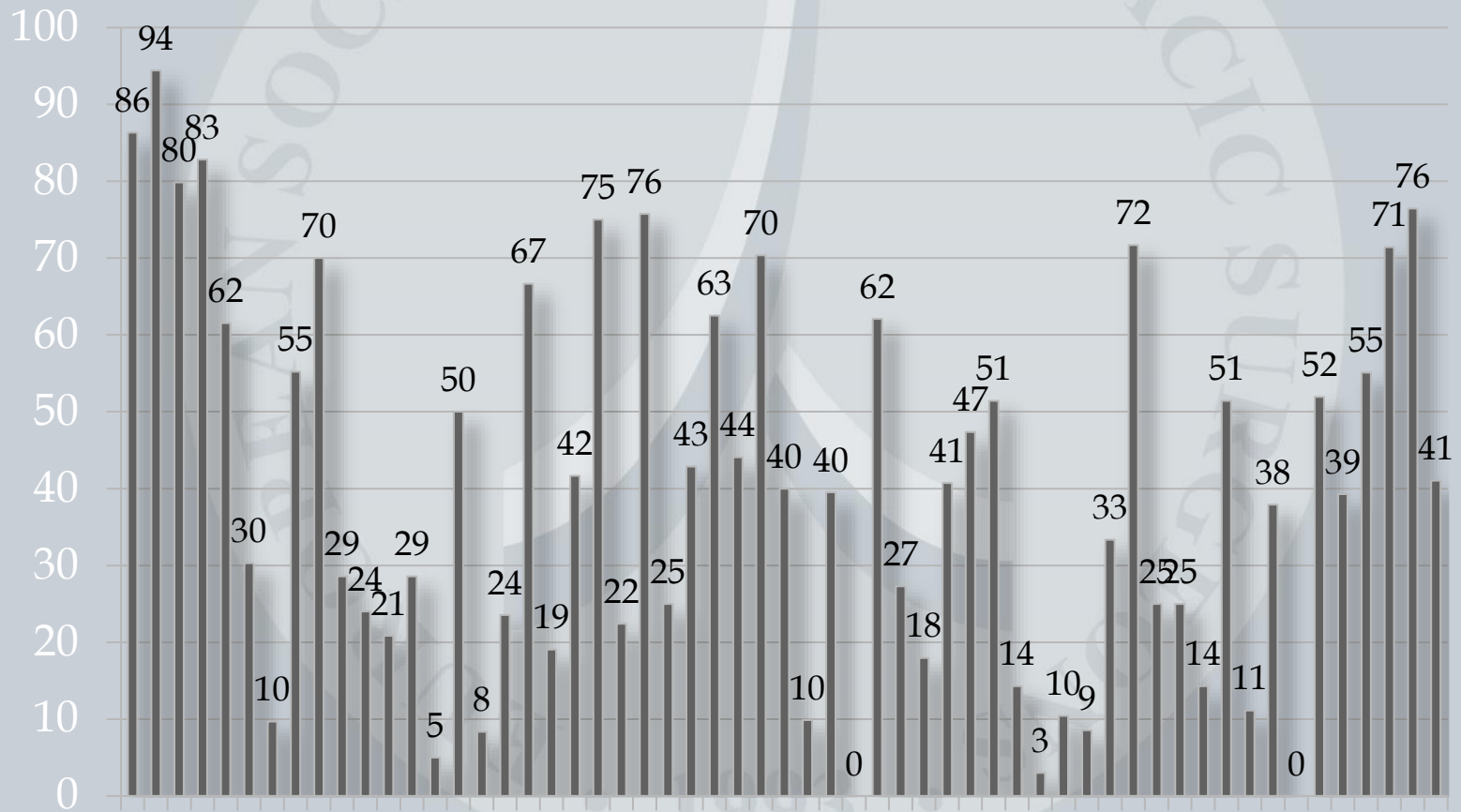
A PROCESS aimed at standardizing and improving practice of European Thoracic Surgery units

ESTS Accreditation IS A QUALITY LABEL

PROPORTION OF PATIENTS WITH DLCO MEASURED IN THE UNITS WITH CALCULATED CPS (2019)



PROPORTION OF PATIENTS WITH CLINICAL N2 UNDERGOING PREOP INVASIVE MEDIASTINAL STAGING IN THE UNITS WITH CALCULATED CPS (2019)



Eligibility criteria for Accreditation

1. Participation to ESTS Database and contributing **>150 anatomic lung resections in the last 3 years**
2. Institution must reside in Europe
3. Head of unit or Clinical Audit lead must be an ESTS member
4. **CPS > 0**
5. **Completeness of variables used to calculate CPS>70%**

Composite Performance Score

Preoperative care:

- % of pts having DLCO measured
- % of pts with CT enlarged or PET+ med nodes undergoing preop invasive mediastinal staging

Operative care:

- % of pts operated on for primary neoplastic disease submitted to systematic lymph node dissection

Postoperative care:

- risk-adjusted cardiopulmonary morbidity rate
- risk-adjusted mortality rate

Models of morbidity and mortality calculated by Eurolung 1 and Eurolung 2

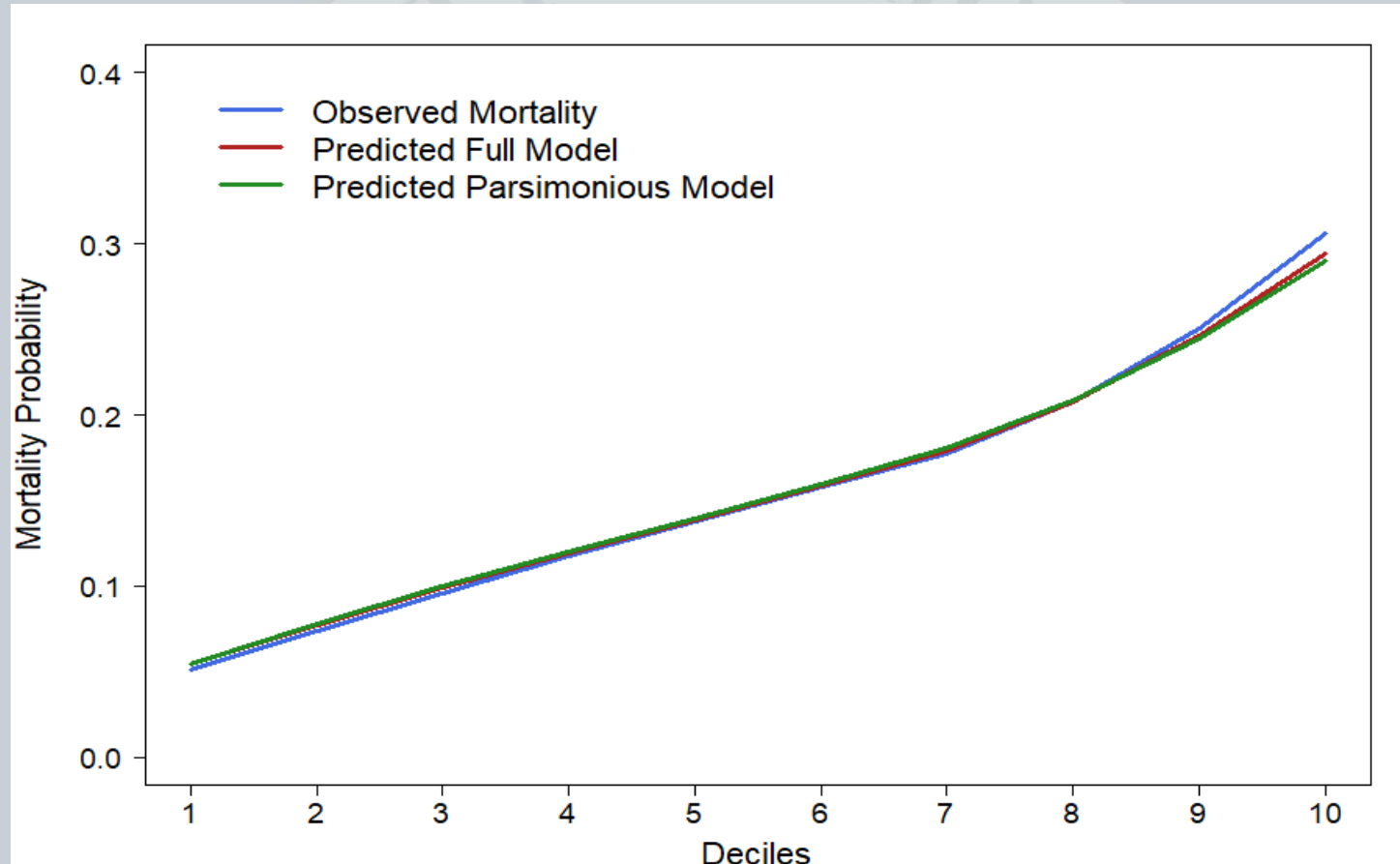
Regression equation for morbidity EuroLung1

$$\text{Logit} = -2.465 + 0.497X_{\text{sex male}} + 0.026X_{\text{age}} + 0.231X_{\text{CAD}} + 0.371X_{\text{CVD}} + 0.152X_{\text{CKD}} - 0.015X_{\text{ppoFEV1}} + 0.514X_{\text{extended resections}} + 0.497X_{\text{thoracotomy}}$$

Regression equation for mortality EuroLung2

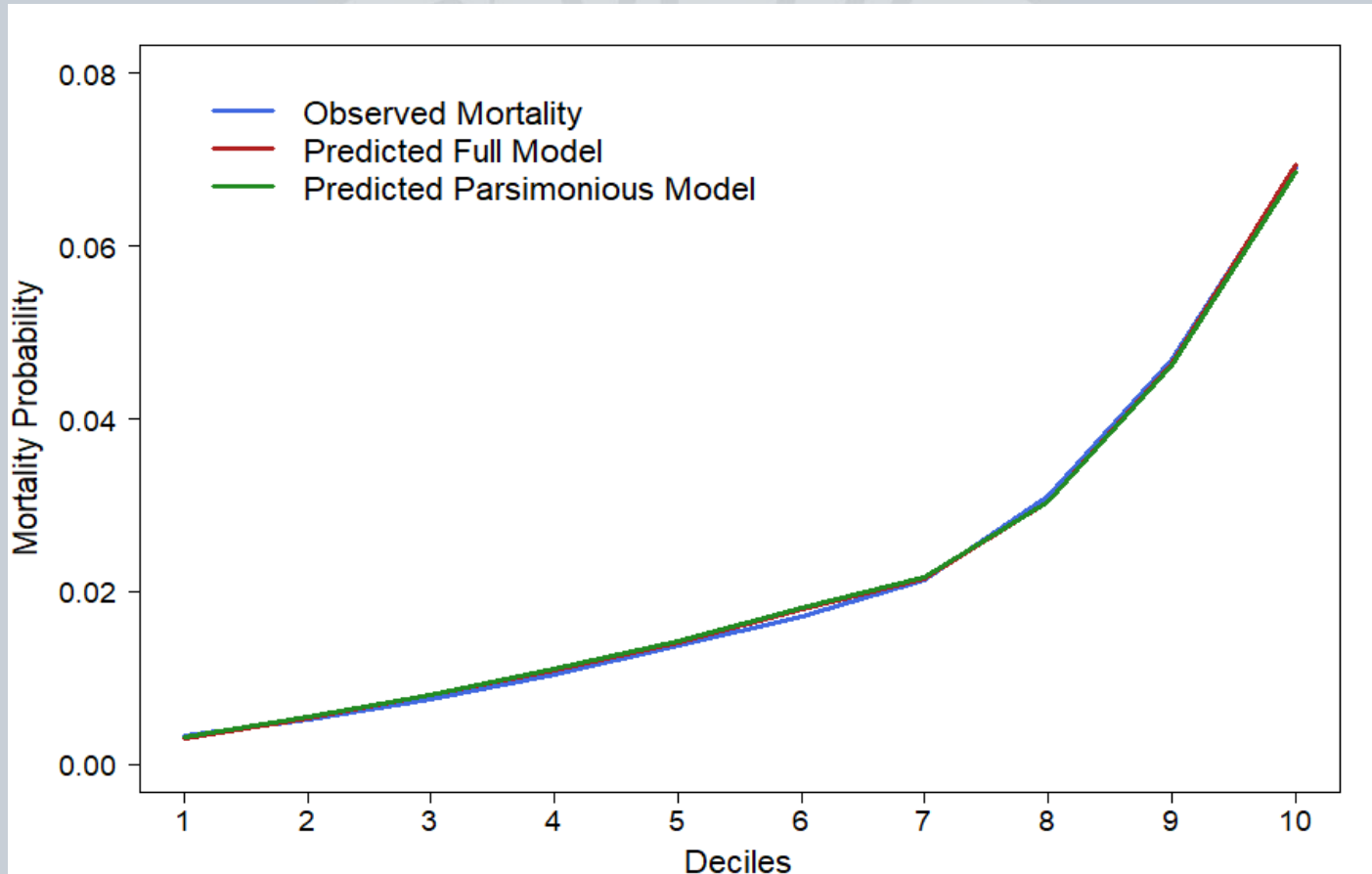
$$\text{logit (mortality)} = -5.82 + 0.903X_{\text{sex male}} + 0.044X_{\text{age}} + 0.264X_{\text{CAD}} + 0.582X_{\text{CVD}} - 0.064X_{\text{BMI}} + 0.300X_{\text{extended resection}} + 0.929X_{\text{pneumonectomy}} + 0.894X_{\text{thoracotomy}} - 0.009X_{\text{ppoFEV1}}$$

Regression logit for morbidity Parsimonious EuroLung1



$$-3.079 + 0.025 * \text{Age} + 0.477 * \text{Male} - 0.015 * \text{ppoFev1} + 0.639 * \text{Thoracotomy} + 0.321 * \text{Extended Resection}$$

Regression logit for mortality Parsimonious EuroLung2



$$\begin{aligned} & -6.350 + 0.047 * \text{Age} + 0.889 * \text{Male} - 0.055 * \text{BMI} - 0.010 * \text{ppoFev1} \\ & + 0.892 * \text{Thoracotomy} + 0.983 * \text{Pneumonectomy} \end{aligned}$$

PROCESS OF ACCREDITATION

MAY: -Central calculation of CPS

-Eligible units announced during ESTS meeting

JUNE: -Invitation letters are sent out to eligible units

JULY: deadline acceptance for accreditation process

AUGUST-MARCH: Local Audits

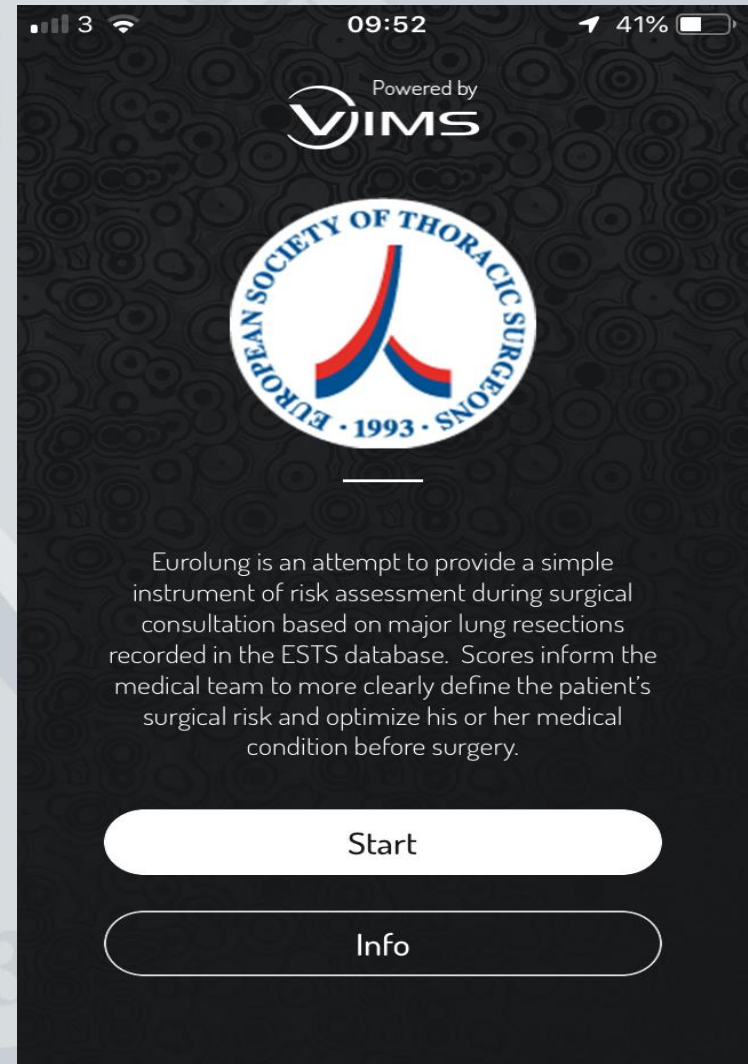
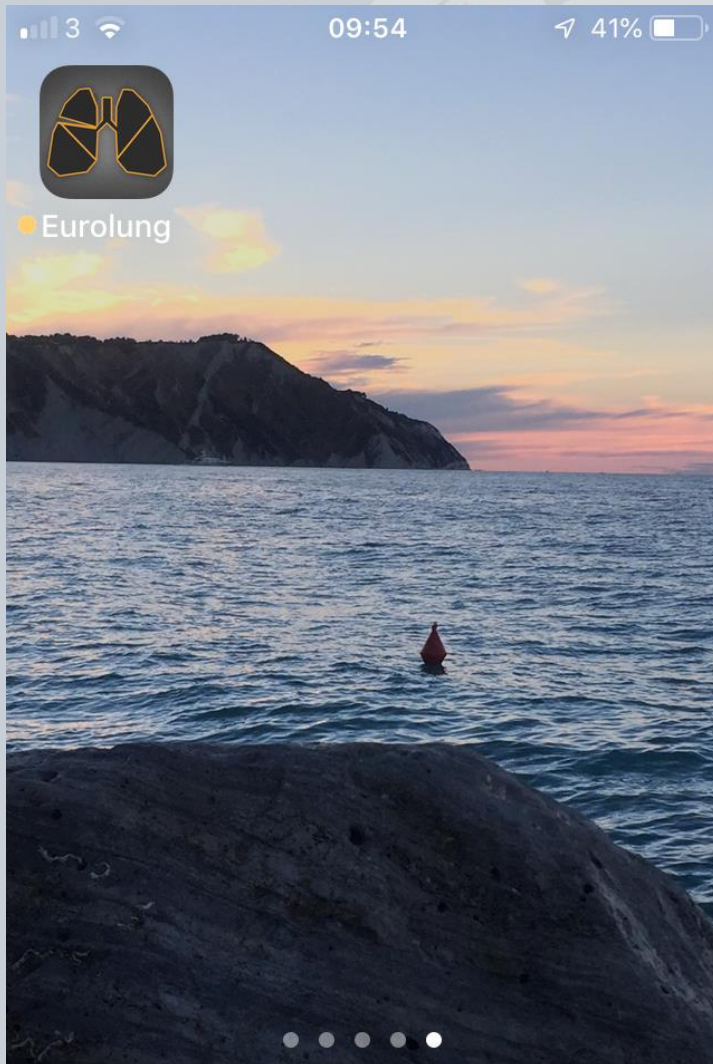
APRIL-MAY: Audit reports reviewed by DB Committee and
ESTS Council

MAY: Accredited units announced during ESTS meeting

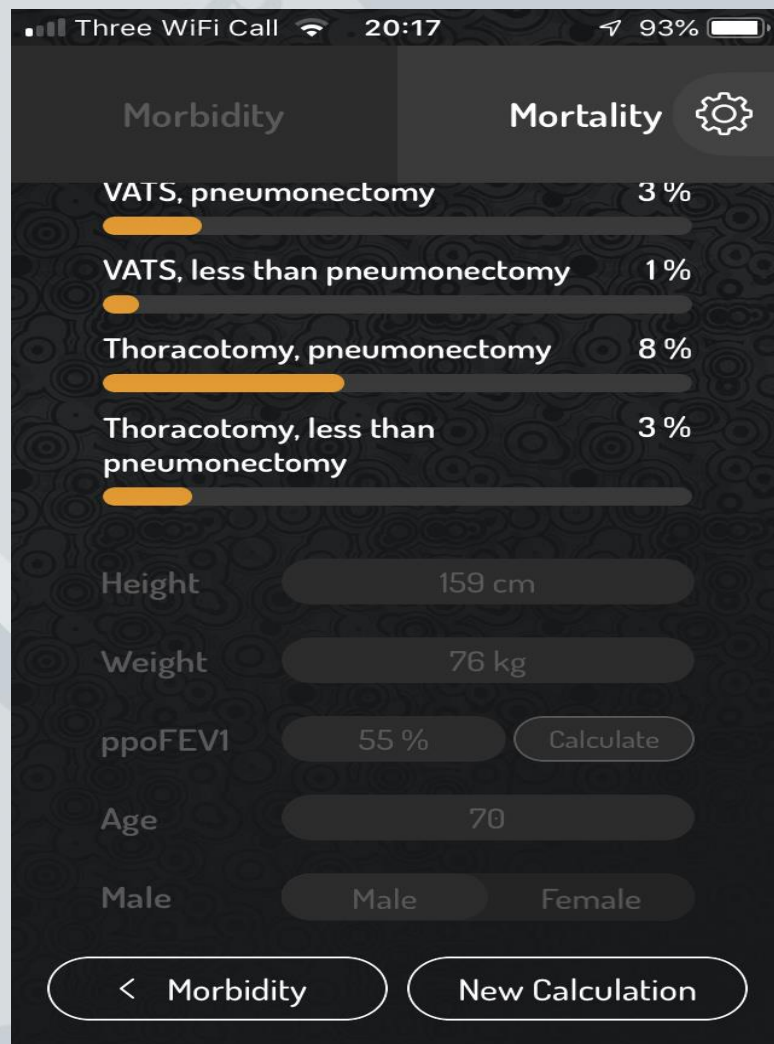
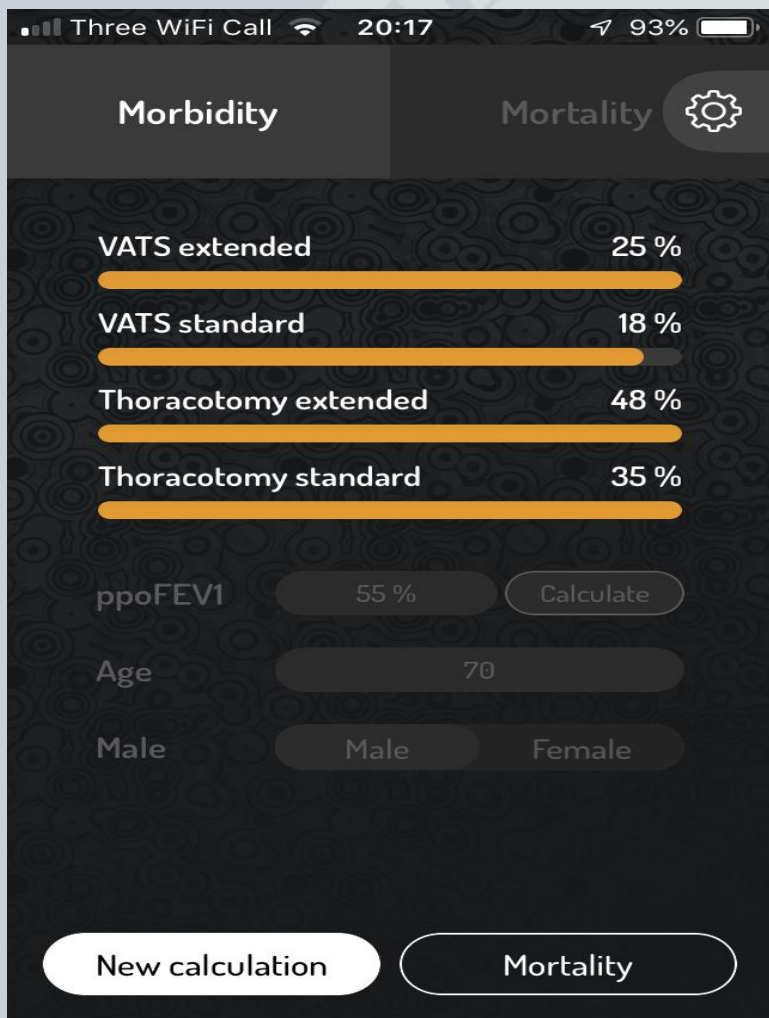
List of currently accredited units

| UNITS | Year of accreditation or revalidation (3 year term) |
|--|--|
| BRATISLAVA, SLOVAKIA | 2019 |
| Ospedale Molinette, TORINO, ITALY | 2019 |
| ANTWERP, BELGIUM | 2018 |
| STRASBOURG, FRANCE | 2018 |
| MARSEILLES, FRANCE | 2018 |
| PASCALE FOUNDATION, NAPLES, ITALY | 2018 |
| OTTO WAGNER, VIENNA, AUSTRIA | 2018 |
| RUHRLANDKLINIK, ESSEN, GERMANY | 2020 |
| UZ LEUVEN, BELGIUM | 2020 |
| HOSPITAL CLINICO SAN CARLOS MADRID, SPAIN | 2020 |
| UNIVERSITY HOSPITAL ZURICH, SWITZERLAND | 2020 |

EUROLUNG APP FOR IPHONE AND ANDROID



EUROLUNG APP FOR IPHONE AND ANDROID



[Home](#)

[Annual Meeting](#)

[About ESTS](#)

[Collaboration](#)

[News](#)

[Education](#)

[Guidelines and Evidence](#)

[Membership](#)

[Committees](#)



ESTS **European Society of Thoracic Surgeons**

[Latest event details](#)...ESTS School of Thoracic Surgery Antalya Turkey 12 - 16 March 2014 12 - 16 Mar 2014

[Home](#) > [Collaboration](#) > ESTS Quality Certification Programme

ESTS Quality Certification Programme



[Click here to download the Institutional Quality Certification PDF](#)

Collaboration

[European Database](#)

[European Directory of Thoracic Surgery](#)

[ESTS Exchange Programme](#)

[ESTS Quality Certification Programme](#)