



# **ESTS INSTITUTIONAL ACCREDITATION**

ALESSANDRO BRUNELLI

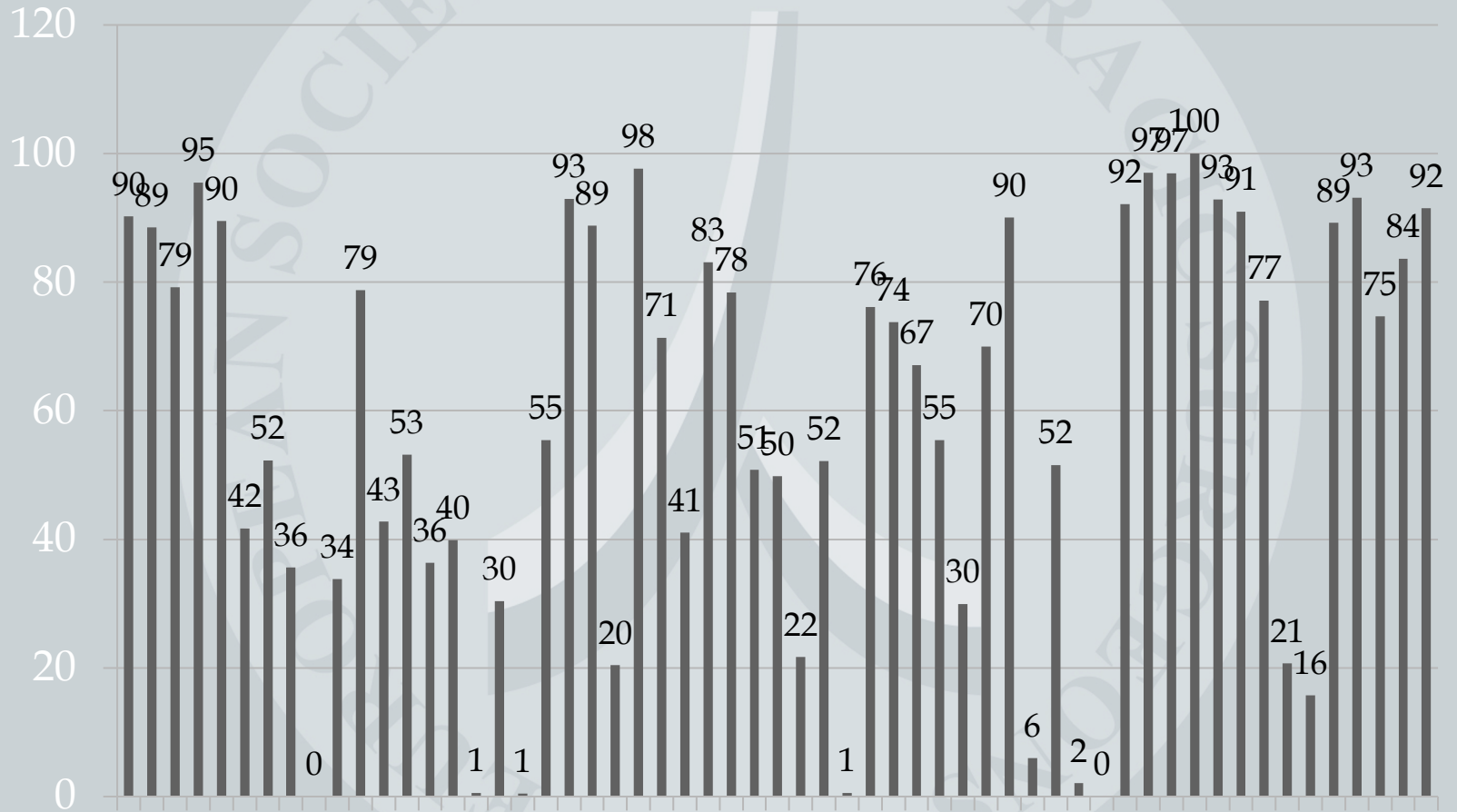
ESTS PRESIDENT

# PURPOSE OF INSTITUTIONAL ACCREDITATION

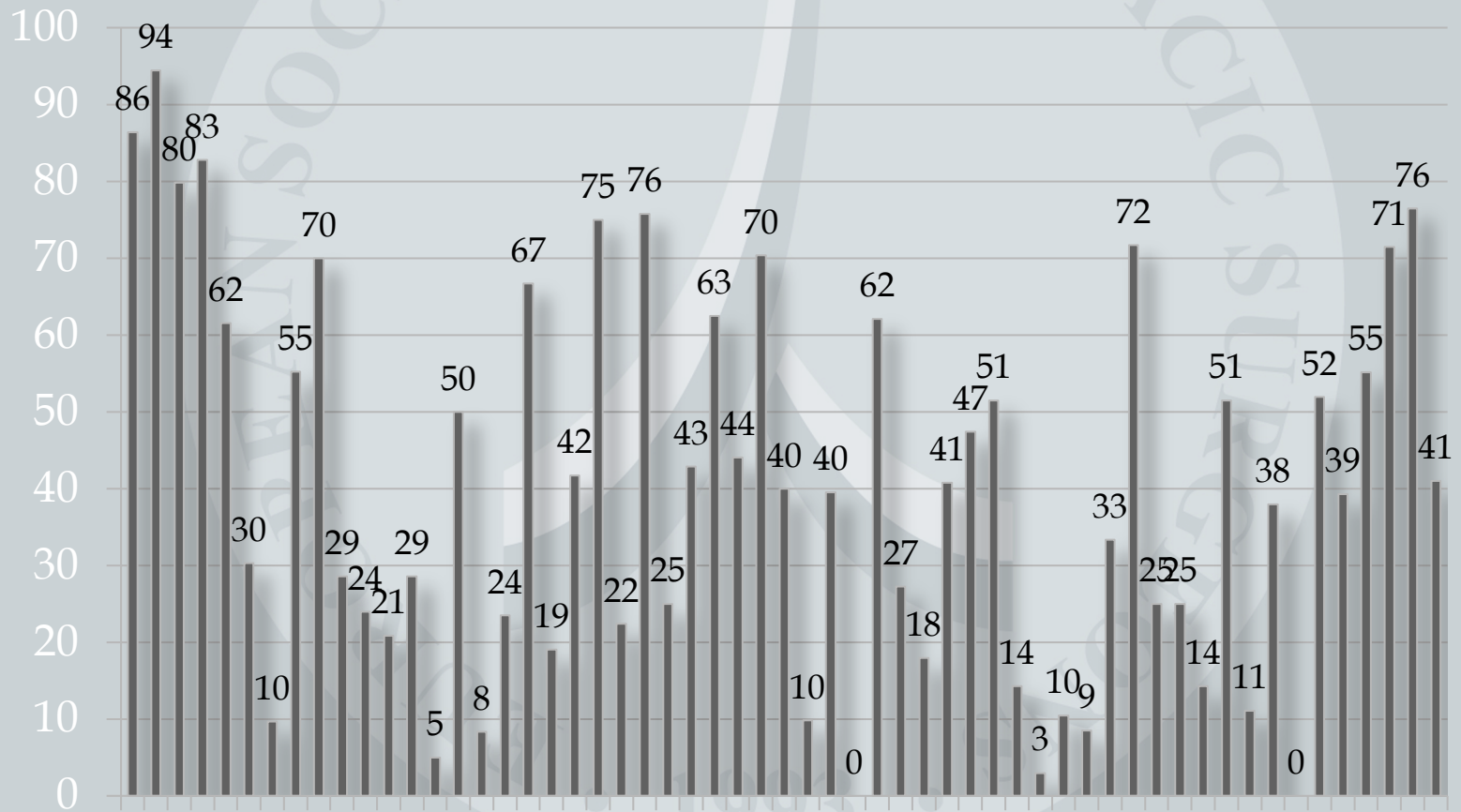
A PROCESS aimed at standardizing and improving practice of European Thoracic Surgery units

ESTS Accreditation IS A QUALITY LABEL

# PROPORTION OF PATIENTS WITH DLCO MEASURED IN THE UNITS WITH CALCULATED CPS (2019)



# PROPORTION OF PATIENTS WITH CLINICAL N2 UNDERGOING PREOP INVASIVE MEDIASTINAL STAGING IN THE UNITS WITH CALCULATED CPS (2019)



# Eligibility criteria for Accreditation

1. Participation to ESTS Database and contributing **>150 anatomic lung resections in the last 3 years**
2. Institution must reside in Europe
3. Head of unit or Clinical Audit lead must be an ESTS member
4. **CPS > 0**
5. **Completeness of variables used to calculate CPS>70%**

# Composite Performance Score

Preoperative care:

- % of pts having DLCO measured
- % of pts with CT enlarged or PET+ med nodes undergoing preop invasive mediastinal staging

Operative care:

- % of pts operated on for primary neoplastic disease submitted to systematic lymph node dissection

Postoperative care:

- risk-adjusted cardiopulmonary morbidity rate
- risk-adjusted mortality rate

Models of morbidity and mortality calculated by Eurolung 1 and Eurolung 2

# Regression equation for morbidity EuroLung1

$$\text{Logit} = -2.465 + 0.497X_{\text{sex male}} + 0.026X_{\text{age}} + 0.231X_{\text{CAD}} + 0.371X_{\text{CVD}} + 0.152X_{\text{CKD}} - 0.015X_{\text{ppoFEV1}} + 0.514X_{\text{extended resections}} + 0.497X_{\text{thoracotomy}}$$

# Regression equation for mortality EuroLung2

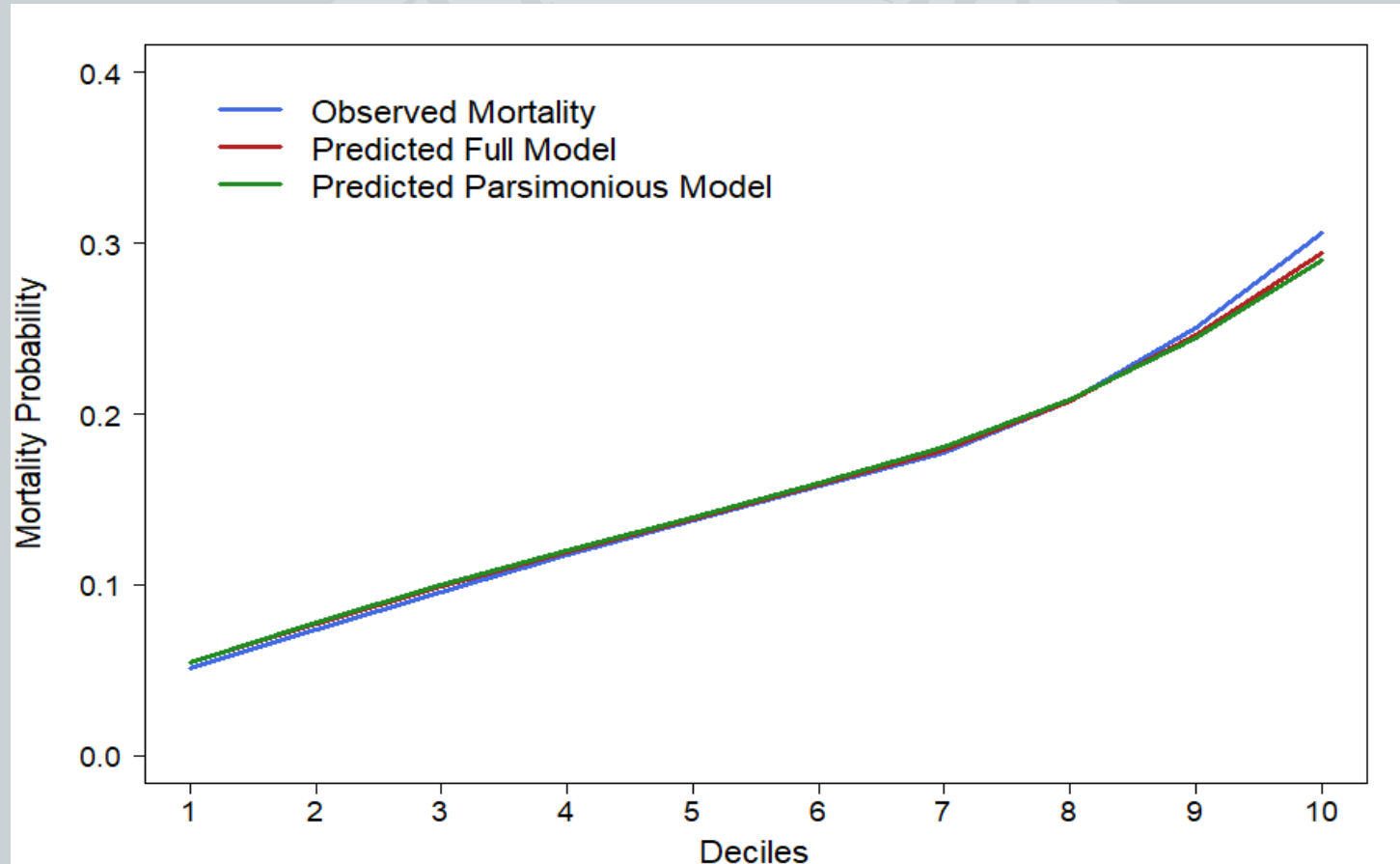
$$\text{logit (mortality)} = -5.82 + 0.903X_{\text{sex male}} + 0.044X_{\text{age}} + 0.264X_{\text{CAD}} + 0.582X_{\text{CVD}} - 0.064X_{\text{BMI}} + 0.300X_{\text{extended resection}} + 0.929X_{\text{pneumonectomy}} + 0.894X_{\text{thoracotomy}} - 0.009X_{\text{ppoFEV1}}$$

# CPS and completeness of variables

	Completeness		
	CPS	PredictedMortality	PredictedMorbidity
Bm02dl	0.15	80	80
Bm05dl	1.84	90	92
Ch10dl	3.3	60	60
Fr130780521	2.74	5	4
Fr140000209	2.83	12	6
Fr210987558	2.84	5	4
Fr290000215	-1.2	3	3
Fr310019351	0.88	7	7
Fr930100037	1.94	5	5
Gy18dl	0.63	56	56
Gy23dl	2.38	78	78
Hu01dl	-1.3	19	20
Hu02dl	0.44	1	1
Hu03dl	-2.1	23	24
Hu07dl	1.8	0	0
Hu12dl	3.83	82	81
It01dl	-2.09	76	23
It03d0	2.75	84	84
It19d0	0.01	95	95
It21d0	1.91	93	92
It32dl	1.74	76	76
It40dl	-0.16	63	56

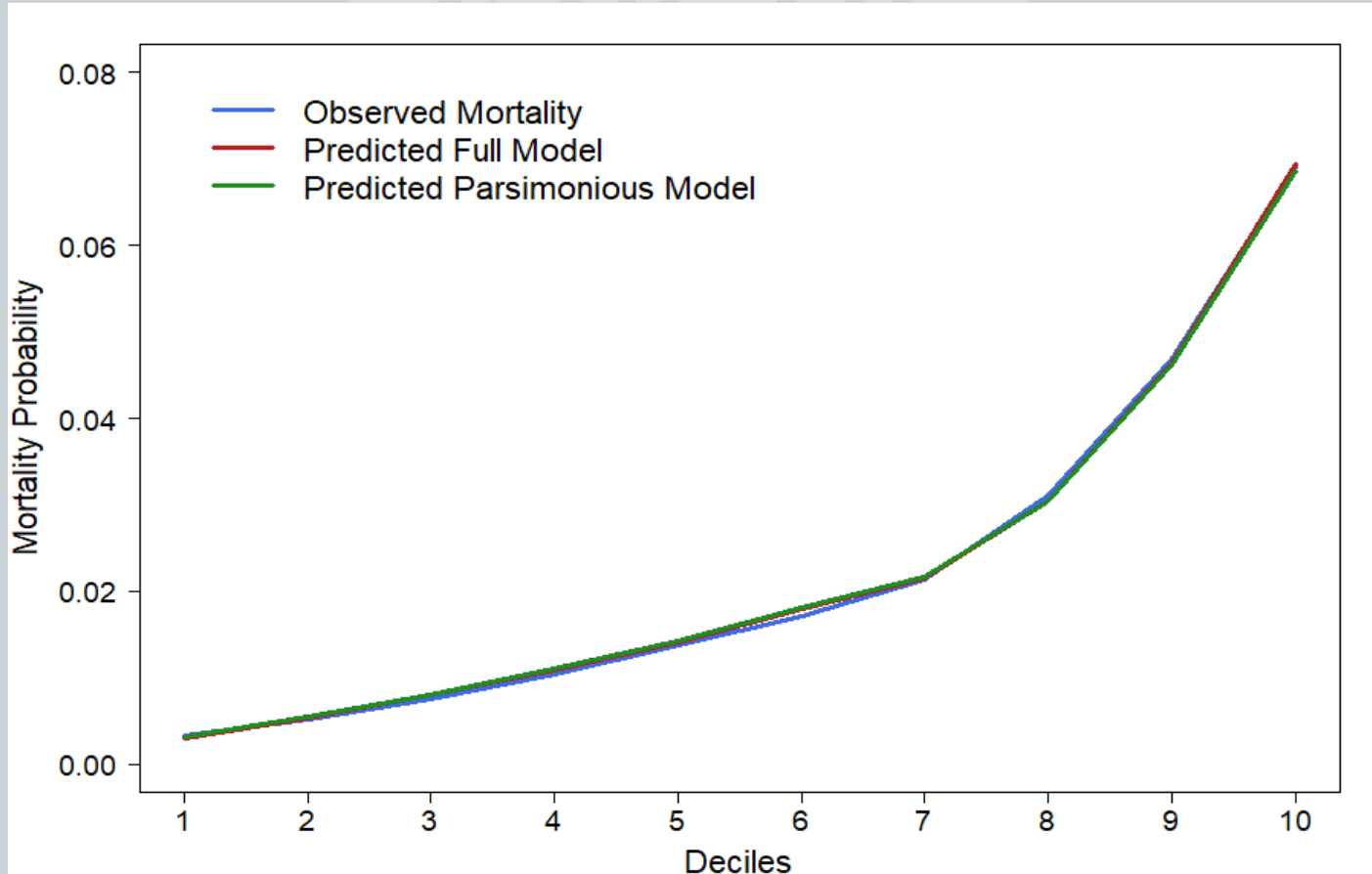


# Regression logit for morbidity Parsimonious EuroLung1



$$-3.079 + 0.025 * \text{Age} + 0.477 * \text{Male} - 0.015 * \text{ppoFev1} + 0.639 * \text{Thoracotomy} + 0.321 * \text{Extended Resection}$$

# Regression logit for mortality Parsimonious EuroLung2



$$\begin{aligned} & -6.350 + 0.047 * \text{Age} + 0.889 * \text{Male} - 0.055 * \text{BMI} - 0.010 * \text{ppoFev1} \\ & + 0.892 * \text{Thoracotomy} + 0.983 * \text{Pneumonectomy} \end{aligned}$$

# PROCESS OF ACCREDITATION

**MAY:** -Central calculation of CPS

-Eligible units announced during ESTS meeting

**JUNE:** -Invitation letters are sent out to eligible units

**JULY:** deadline acceptance for accreditation process

**AUGUST-MARCH:** Local Audits

**APRIL-MAY:** Audit reports reviewed by DB Committee and  
ESTS Board of Directors

**MAY:** Accredited units announced during ESTS meeting

## List of currently accredited units

UNITS	Year of accreditation or revalidation (3 year term)
Bratislava, Slovakia	2019
Ospedale Molinette, Torino, Italy	2019
University Hospital Leuven, Belgium	2020
University Hospital Zurich	2020
University Of Milan-policlinico Hospital Milan, Italy	2020
University Medicine Essen – Ruhrlandklinik, Essen, Germany	2020
Hospital Clinico San Carlos, Madrid, Spain	2020
Ospedali Riuniti, Foggia, Italy	2021
Wielkopolskie Centrum Pulmonologii I Torakochirurgii, Poznan, Poland	2021
Stadtkrankenhaus Delmenhorst Gmbh, Germany	2021
Campus Biomedico University Of Rome, Italy	2021
St James’s University Hospital, Leeds, Uk	2021
Nouvel Hopital Civil, Strasbourg, France	2021
Ramon y Cajal University Hospital, Madrid, Spain	2022
Antwerp University Hospital, Antwerp, Belgium	2022
Salamanca University Hospital, Salamanca, Spain	2022
Institut du Thorax Curie-Montsouris, Paris, France	2022
Grand Hôpital de Charleroi, Site Gilly, Charleroi, Belgium	2022
Solznok County Hospital, Solznok, Hungary	2022



**ESTS**

European Society of Thoracic Surgeons

Member Login



## Professional Development

[Institutional Accreditation](#)

[Certification](#)

[Applications for Advertising and Endorsement of International](#)

[Home](#) > [Professional Development](#) > [Institutional Accreditation](#)

## ESTS Quality Certification Program

The link to the 2020 Institutional Quality Certification guide is below;

 [Download the Institutional Quality Certification PDF](#)